



DEMONSTRATION

- Learn about cocoa and chocolate in our handcrafted factory
- Cocoa beans, sustainable chocolates and pralines tastings
- Live demonstration of praline making by one of our chocolatiers
- Recommended as from 6 years old
- Time : 60 min.
- Capacity : max. 100 persons

Less than 20 people : 181€ (guide included 1H)
As from 20 people : 6€pp + 61€ for the guide (1guide per 100 people)

V.I.P. MASTERCLASS

- Full assistance of our Master chocolatier (+ guide if required for the language translation)
- Learn about cocoa and chocolate in our handcrafted factory in a very exclusive atmosphere
- Get hands-on in a 3-hour experience : learn how to temper chocolate, hand cut and dip pralines and handcrafted hollow figures
- You go home with all your production +1kg
- Recommended as from 16 years old

1 person : 402€ (guide included 3H)
Extra person : 62€per person (max. 3 persons)



CHOCOLATEWORKSHOP

- Demonstration above +
- Active participation where you all get to join in
- Making of chocolates and tablets with toppings +- 250g of chocolate per person
- Recommended as from 8 y/o - Kids prices O.D.
- Time : 90 / 120 min.
- Capacity : max. 100 persons

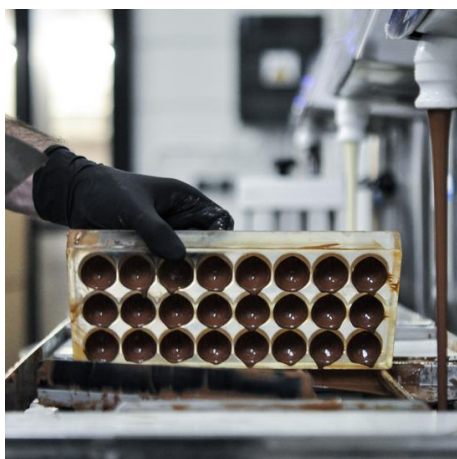
Less than 5 people : 267€ (guide included 1H30)
Between 5 and 10 people : 35€pp + 92€ for the guide (1H30)
Between 10 and 20 people : 30€pp + 92€ for the guide (1H30)
As from 20 people : 25€pp + 122€ for the guide (1 guide per 50 persons 2H00)



BEER & CHOCOLATE PAIRING

- Demonstration above +
- 4 associations of Belgian beers & chocolates
- Assortment between sweet, sour, bitter, fruity, hoppy and malty beers
- Recommended as from 16 years old
- Capacity : max. 100 persons

Less than 5 people : 267€ (guide included 1H30)
Between 5 and 10 people : 35€pp + 92€ for the guide (1H30)
Between 10 and 20 people : 30€pp + 92€ for the guide (1H30)
As from 20 people : 25€pp + 122€ for the guide (1 guide per 50 persons 2H00)



PRALINEWORKSHOP

- Demonstration above +
- Active participation where you all get to join in
- Making of moulded pralines - use of 1 mould per person +-350g of chocolates/pralines per person
- Recommended as from 16 years old
- Time : 90 / 120 min.
- Capacity : max. 50 persons

Less than 5 people : 352€ (guide included 1H30)
Between 5 and 10 people : 52€pp + 92€ for the guide (1H30)
Between 10 and 20 people : 45€pp + 92€ for the guide (1H30)
As from 20 people : 38€pp + 122€ for the guide (1 guide per 50 persons 2H00)

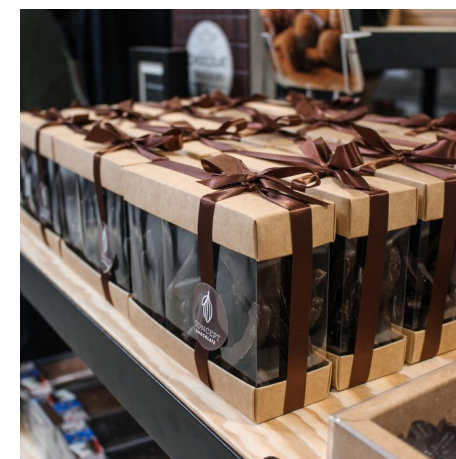
FACTORYSHOP

Once your activity is over, why not visit our shop where you will find all sorts of handcrafted chocolates, pralines, truffles, bars, tablets and much more... made with love by our team.

Handcrafted, sustainable, artisan, local, high-quality and eco-friendly chocolates at fair prices.

Special chocolate gifts can be prepared for your groups on demand! A tasty finish to your visit!

Products price range : 2€ - 80€



La Chocolaterie CONCEPT CHOCOLATE

Rue des Chardons, 19
1030 Brussels - Belgium
BE0840.529.348

Information and bookings :
info@conceptchocolate.eu
+32 2 242 94 66

Look at our activities and products on our website and social medias :
www.conceptchocolate.eu
@conceptchocolate
#conceptchocolate



CONCEPT
CHOCOLATE



What makes us different :

Activities in the brochure are made for groups only
Open every day from 9am - 5pm
is compulsory to book the activities in advance by email

A guide is compulsory as you are in a real working place

We speak different languages according to availability :
FR-EN-NL-ES-DE-IT-DA-NO-SV-EL-JP-ZH

You can be sure that activities are for one group at a time

Pre-payment and vouchers accepted

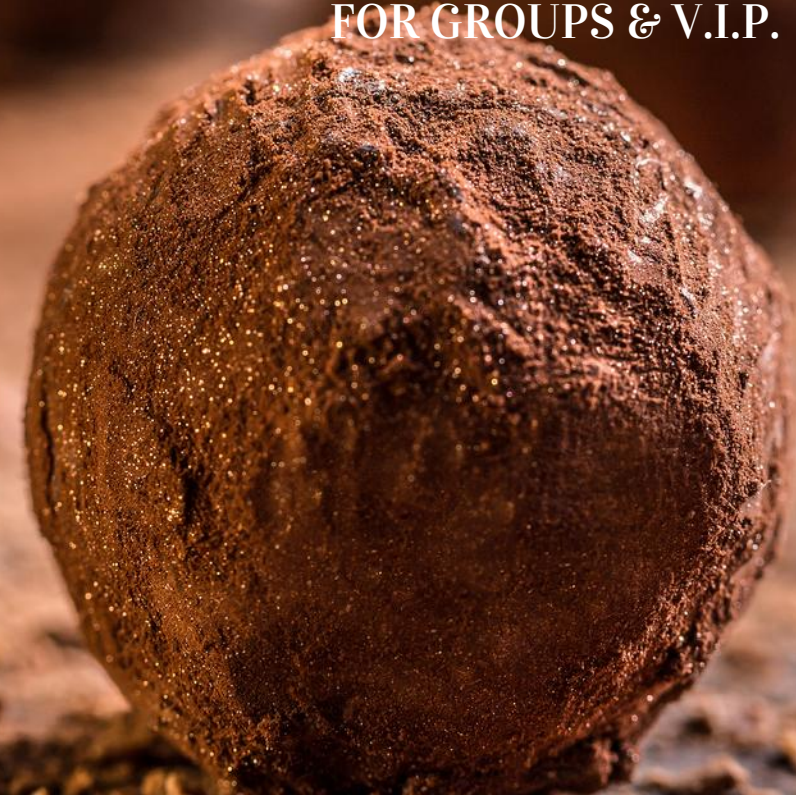
How to reach us:

From Grand-Place : 15 min by car/coach, By public transports : Bus 64 and 65 (Patrie stop), Tram 25 and 62 (Patrie stop), Train : Meiser station, Biking & Walking : 15 and 45 min



CONCEPT
CHOCOLATE

CHOCOLATE
EXPERIENCE
FOR GROUPS & V.I.P.



Family business based in Brussels



ETOA